



**NRS**

2014 COLLECTION





## H<sub>2</sub>CORE™

NRS H2Core is the first and only layering system designed specifically for paddlers. Perfectly placed seams create friction-free zones where other clothing rubs paddlers wrong. Advanced technical fabrics wick moisture, dry quickly and protect you from harmful UV rays.



Unlike general-purpose outdoor apparel, H2Core's features enhance, not detract from, your time on the water. So pick your perfect combo and go paddle.





## H<sub>2</sub>CORE

### SILKWEIGHT

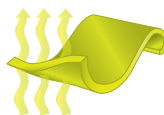
The foundation of warm-weather layering, H2Core Silkweight keeps you cool, sunburn-free and comfortable for paddling. Wear it alone on hot days or as a base layer in cooler weather. UPF 45+



## H<sub>2</sub>CORE

### RASHGUARD

H2Core Rashguard provides maximum protection from sun and abrasion with fabrics that wick moisture, breathe freely and dry quickly. Form-fitting pieces eliminate excess fabric for athletic performance. UPF 50+



## H<sub>2</sub>CORE

### LIGHTWEIGHT

H2Core lightweight combines sun protection and quick-drying breathability with just the right amount of warmth for cooler weather. It's the perfect layer to help take the chill off, whether on the water or around the campfire. UPF 45+



## H<sub>2</sub>CORE

### EXPEDITION WEIGHT

H2Core Expedition Weight fabrics maximize warmth without restricting movement for thermal protection in cold weather. Designed specifically for comfort under drytops and drysuits with cuffs and necklines that play well with gaskets.





#### Men's Short Sleeve Shirt

blue, gray, green, red  
Sizes: S-XXL; Imported

#10108.01 | **\$34.95**



#### Men's Long Sleeve Shirt

blue, gray, green, red  
Sizes: S-XXL; Imported

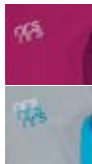
#10114.01 | **\$39.95**



#### Women's Short Sleeve Shirt

ocean, purple haze, gray  
Sizes: XS-XL; Imported

#10111.01 | **\$34.95**

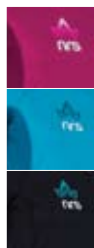


#### Women's Long Sleeve Shirt

ocean, purple haze, gray  
Sizes: XS-XL; Imported

#10115.01 | **\$39.95**





#### Women's Short Sleeve Rashguard

gray, purple haze, ocean

Sizes: XS-XL; Imported

#10020.04 | **\$44.95**

#### Women's Long Sleeve Rashguard

gray, purple haze, black

Sizes: XS-XL; Imported

#10021.03 | **\$49.95**



#### Men's Short Sleeve Rashguard

blue, gray, dark gray, chili

Sizes: S-XXL; Imported

#10001.04 | **\$44.95**

#### Men's Long Sleeve Rashguard

blue, gray, black, dark red

Sizes: S-XXL; Imported

#10002.03 | **\$49.95**





#### Men's Shirt

dark blue/gray, gray/chili  
Sizes: S-XXL; Imported  
#10116.01 | **\$54.95**



#### Men's Zip

charcoal/gray, dark blue/blue  
Sizes: S-XXL; Imported  
#10118.01 | **\$64.95**



#### Women's Shirt

charcoal, gray/purple haze  
Sizes: XS-XL; Imported  
#10117.01 | **\$54.95**



#### Women's Zip

charcoal, gray/ocean  
Sizes: XS-XL; Imported  
#10119.01 | **\$64.95**



#### Men's Pant

charcoal | Sizes: S-XXL; Imported  
#10122.01 | **\$49.95**



#### Women's Pant

charcoal | Sizes: XS-XL; Imported  
#10123.01 | **\$49.95**





LIGHTWEIGHT



### Lightweight H2Core Hoodie

Performance fabrics, casual style and a friction-free paddlesports cut make the H2Core hoodie a hard piece to leave behind. Wear it in the boat to take the chill off, throw it on in camp or rock it at the post-paddle pub.



#### Men's Hoodie

charcoal/gray, gray  
Sizes: S-XXL; Imported  
#10120.01 | **\$64.95**



#### Women's Hoodie

gray, ocean  
Sizes: XS-XL; Imported  
#10121.01 | **\$64.95**



EXPEDITION  
WEIGHT







**EXPEDITION  
WEIGHT**



**Men's Shirt**

black/gray | Sizes: S-XXL; Imported  
#10130.03 | **\$89.95**



**Men's Pant**

black | Sizes: S-XXL; Imported  
#10131.03 | **\$79.95**



**Women's Shirt**

black/gray | Sizes: XS-XL; Imported  
#10135.03 | **\$89.95**



**Women's Pant**

black/gray | Sizes: XS-XL; Imported  
#10137.03 | **\$79.95**

# HYDROSKIN®

When your clothing's adaptable, you're adaptable—to conditions, situations, opportunities. HydroSkin gives you the freedom to adapt, so you can go paddle when others go home.



Only HydroSkin gives you a range of options between wearing no immersion protection and wiggling into a wetsuit. Three neoprene thicknesses and a variety of tops and bottoms let you layer to match the weather and water, while paddler-specific designs ensure friction-free comfort and freedom of motion.







#### **HYDROSKIN 0.5**

Stretchy 0.5 mm neoprene material provides lightweight immersion protection to help extend your season. Four-way-stretch exterior allows unrestricted movement, and the ThermalPlush™ lining feels great against your skin.

#### **HYDROSKIN 1.0**

1 mm HydroSkin 1.0 provides twice the insulation of HydroSkin 0.5, without feeling bulky or restrictive. With four-way stretch comfort and our soft ThermalPlush™ lining, it feels as good as it looks.

#### **HYDROSKIN 1.5**

Our thickest HydroSkin offering, HydroSkin 1.5 provides substantial warmth without restricting your movements or cramping your style. Four-way-stretch exterior and cozy quick-drying VaporLoft™ lining.







**Men's Jacket** *Grizzly sizing available*  
black/gray | Sizes: S-XXL; Imported  
#15008.02 | **\$114.95**



**Men's Pant**  
black | Sizes: S-XXL; Imported  
#15012.02 | **\$99.95**

**Men's Short**  
black | Sizes: S-XXL; Imported  
#15015.02 | **\$69.95**



**Men's Short Sleeve Shirt**

gray/green, red/chili, blue, black/green  
Sizes: S-XXL; Imported  
#15001.04 | **\$79.95**

**Men's Long Sleeve Shirt**

gray/chili, blue, black/green  
Sizes: S-XXL; Imported  
#15002.03 | **\$97.95**





#### Women's Jacket

black/gray | Sizes: XS-XXL; Imported  
#15010.02 | **\$114.95**



#### Women's Pant

black | Sizes: XS-XL; Imported  
#15013.02 | **\$99.95**



#### Women's Shorts

black | Sizes: XS-XL; Imported  
#15016.02 | **\$54.95**



#### Women's Skirt Short

black | Sizes: XS-XL; Imported  
#15044.01 | **\$69.95**



#### Women's Capris

black | Sizes: XS-XL; Imported  
#15017.02 | **\$94.95**



#### Women's Skirt Capris

black | Sizes: XS-XL; Imported  
#15033.01 | **\$109.95**







#### Women's Short Sleeve Shirt

gray/ocean, dark ocean, purple haze

Sizes: XS-XXL; Imported

#15003.04 | **\$79.95**

#### Women's Long Sleeve Shirt

gray/purple haze, drk. ocean, purple haze, black/ocean

Sizes: XS-XXL; Imported

#15004.02 | **\$97.95**







#### Men's Shirt

black | Sizes: S-XXL; Imported  
#15032.02 | **\$89.95**

#### Women's Shirt

black | Sizes: XS-XL; Imported  
#15034.01 | **\$89.95**

#### HydroSkin 1.0 Shirt

Core warmth meets athletic performance in this super stretchy 1 mm neoprene top. Raw neoprene in the chest, back and shoulders sheds water to prevent evaporative cooling, and friction-free seams ensure comfort for all types of paddling.







### HydroSkin 1.5 Shirt

With 1.5 mm neoprene insulation and our warm, quick-drying VaporLoft™ lining, this comfortable top provides substantial warmth for colder conditions without feeling bulky or restrictive. A paddlesports cut puts seams where they won't cause irritation, a thinner 0.5 mm HydroSkin under the arms adds stretch and reduces bunching, and a half-length offset side zip makes donning easy.

#### Men's Shirt

black | Sizes: S-XXL; Imported  
#15035.01 | **\$119.95**

#### Women's Shirt

black | Sizes: XS-XL; Imported  
#15036.01 | **\$119.95**



**HYDROSKIN 1.5**



**Women's Jacket**

black | Sizes: XS-XXL; Imported  
#15039.01 | **\$129.95**



**Women's Pant**

black | Sizes: XS-XL; Imported  
#15041.01 | **\$109.95**

**Women's Capris**

black | Sizes: XS-XL; Imported  
#15042.01 | **\$99.95**





HYDROSKIN 1.5



**Men's Jacket** *Grizzly sizing available*

black | Sizes: S-XXL; Imported  
#15037.01 | **\$129.95**



**Men's Shorts**

black | Sizes: S-4XL; Imported  
#15043.01 | **\$79.95**

**Men's Pant**

black | Sizes: S-XXL; Imported  
#15040.01 | **\$109.95**



#### **Youth Farmer Bill**

This 3 mm neoprene wetsuit helps protect your young one in cold water and cold weather.

black/color-coded by size

Sizes: YXS-YXL

#17271.01 | **\$89.95**



#### **Youth 2.5 Shorty**

2.5 mm of neoprene provides core warmth for smaller bodies susceptible to the cold.

black | Sizes: 3T-YXL; Imported

#17263.01 | **\$49.95**







### Youth HydroSilk™ Sun Shirts

No need to chase them down to apply messy sunscreens—UPF 50+ HydroSilk blocks the sun's rays.

#### Youth Short Sleeve Sun Shirt

green, blue | Sizes: YM-YYXL; Imported  
#10035.02 | **\$24.95**

#### Youth Long Sleeve Sun Shirt

green, blue | Sizes: YM-YYXL; Imported  
#10036.02 | **\$29.95**



### KidSkin™

Stretchy 0.5 mm neoprene KidSkin provides comfortable warmth for kids, whether boating or just playing in the water.

#### Youth KidSkin Shirt

navy/gray | Sizes: YS-YL; Imported  
#15005.01 | **\$49.95**

#### Youth KidSkin Jacket

black/gray | Sizes: YS-YL; Imported  
#15011.01 | **\$59.95**

#### Youth KidSkin Pant

black | Sizes: YS-YL; Imported  
#15014.01 | **\$47.95**





#### **Mystery Full-Cut Liner**

1 mm | Sizes: S/M, L/XL; Imported  
#15028.01 | **\$24.95**



#### **Mystery Side-Cut Liner**

1 mm | Sizes: S/M, L/XL; Imported  
#15029.01 | **\$24.95**



#### **Mystery Sea Hood**

2.5 mm | Sizes: S/M, L/XL; Imported  
#15027.01 | **\$29.95**



#### **Mystery Sea Hood with Bill**

2.5 mm | Sizes: S/M, L/XL; Imported  
#15026.01 | **\$34.95**



#### **Mystery Storm Hood**

1 mm | Sizes: S/M, L/XL; Imported  
#15030.01 | **\$34.95**

### **2.0 Wetsuits**

Same proven design as the 3.0 Farmer Wetsuits, in a lighter 2 mm fabric.

#### **Men's 2.0 Farmer John**

black | Sizes: XS-4XL; Imported  
#17264.02 | **\$99.95**

#### **Women's 2.0 Farmer Jane**

black | Sizes: XS-XL; Imported  
#17265.02 | **\$99.95**



### **3.0 Wetsuits**

Our most popular wetsuit is tremendously versatile with 3 mm neoprene insulation.

#### **Men's 3.0 Farmer John**

black | Sizes: S-3XL; Imported  
#17266.02 | **\$129.95**

#### **Women's 3.0 Farmer Jane**

black | Sizes: XS-XXL; Imported  
#17267.02 | **\$129.95**



### **3.0 Ultra Wetsuits**

VaporLoft™ lining for ultra warmth and comfort. The best sleeveless suit you can buy.

#### **Men's 3.0 Ultra John**

black | Sizes: S-3XL; Imported  
#17272.02 | **\$189.95**

#### **Women's 3.0 Ultra Jane**

black | Sizes: XS-XXL; Imported  
#17274.02 | **\$189.95**















### NEW Radiant 3/2 Wetsuits

This comfortable back-zip suit mixes 3 and 2 mm neoprene for the perfect balance of warmth and mobility. Smooth-skin neoprene on the chest and back sheds water to reduce evaporative cooling, while four-way-stretch PowerSpan™ nylon in the shoulders, arms and legs stretches to match your movements. A soft, quick-drying VaporLoft™ lining adds extra warmth and comfort, and a paddlesports cut ensures friction-free strokes.



#### Men's Radiant 3/2 Wetsuit

black | Sizes: XS-3XL; Imported  
#17279.02 | **\$219.95**

#### Women's Radiant 3/2 Wetsuit

black/blue | Sizes: XS-XXL; Imported  
#17280.01 | **\$219.95**

### NEW Radiant 4/3 Wetsuits

Our Radiant 4/3 wetsuit gives you maximum warmth while retaining comfort and freedom of motion. The SUP-inspired design features a comfortable back zipper, water-shedding smooth-skin torso and a VaporLoft™ fleece lining that dries in a flash. 4 mm neoprene provides warmth where you need it most while 3 mm neoprene in key areas improves mobility. The PowerSpan™ exterior stretches with your movements, and ToughTex™ padding protects your knees.



#### Men's Radiant 4/3 Wetsuit

black | Sizes: XS-3XL; Imported  
#17281.01 | **\$269.95**

#### Women's Radiant 4/3 Wetsuit

black | Sizes: XS-XXL; Imported  
#17282.01 | **\$269.95**



### **Endurance Jackets**

Banish wind, splash and rain for a more enjoyable paddle.

#### **Men's**

blue, red, green | Sizes: XS-3XL; Imported  
#20010.03 | **\$99.95**



#### **Women's**

berry, blue | Sizes: XS-XXL; Imported  
#20011.03 | **\$99.95**







### **Payette Jacket**

The short-sleeve NRS Payette Paddle Jacket comes to the rescue on those in-between days when the weather's warm but the water's chilly, or vice-versa. Get great splash protection without overheating.

lime/gray, blue/gray | Sizes: S-XXL; Imported  
#20009.02 | **\$84.95**



### **Endurance Splash Pant**

Waterproof-breathable comfort in and out of the boat. Slips on easily over your other layers.

black | Sizes: XS-XXL; Imported  
#20015.02 | **\$99.95**



### **Women's Carolina Splash Pant**

Waterproof splash protection cut for women's comfort.

black | Sizes: XS-XXL; Imported  
#20018.02 | **\$119.95**



### Edge Splash Pants

Tough, roomy, breathable pants keep splash and rain out, dry comfort in.

#### Men's

black | Sizes: S-XXL; Imported  
#20017.01 | **\$154.95**

#### Women's

gray | Sizes: XS-XXL; Imported  
#20019.01 | **\$154.95**



### Sea Tour Jacket

Comfortable, convenient protection that's a cinch to stow. Wear it over or under your life jacket.

yellow, red | Sizes: S-XXL; Imported  
#20014.02 | **\$179.95**



### Powerhouse Jackets

Zip-up neoprene neck seal and other advanced features take splash protection to the next level.

#### Men's

blue, mango, gray | Sizes: S-XXL; Imported  
#20012.03 | **\$129.95**

#### Women's

blue | Sizes: XS-XL; Imported  
#20013.03 | **\$129.95**



JOIN THE COMMUNITY







## Stampede Play Jackets

Nearly as dry as a full drytop, just easier to wear and easier on the wallet.



### Shorty

charcoal/yellow | Sizes: S-XXL; Imported  
#22512.03 | **\$139.95**



### Long Sleeve Jacket

red/charcoal | Sizes: S-XXL; Imported  
#22513.03 | **\$179.95**





### Black Rock Dry Pants

Waterproof, breathable, durable, dependable. Our classic dry pant.

black | Sizes: S-XXL; Imported  
#22518.01 | **\$174.95**



### Freeride Dry Pants

Roomy cut, burly construction and laid-back look make them a gear-bag essential.

black | Sizes: S-XXL; Imported  
#22520.01 | **\$189.95**



### Women's Athena Dry Pants

Built for women's comfort, these durable dry pants will soon be your best friend on the water.

black | Sizes: XS-XL; Imported  
#22519.01 | **\$179.95**





© Eric Parker



#### Revolution Drytop

The world's toughest, driest drytop.  
The steep-creeker's fave.

black | Sizes: S-XXL; Imported  
#22517.03 | **\$349.95**





## Flux Drytops | **IMPROVED**

Our most popular drytop just got better. New high-performance four-layer Eclipse™ fabric and action-cut design for maximum comfort and mobility.

### Men's

blue/black, green/black | Sizes: S-XXL; Imported  
#22515.03 | **\$324.95**

### Women's

blue/blue | Sizes: XS-XL; Imported  
#22516.03 | **\$324.95**



©Sarah McInnis-Landry



©Sarah McInnis-Landry



©Sarah McInnis-Landry







### Crux Drysuits | **NEW**

Four-layer Eclipse™ fabric gives kayakers a new standard for unmatched freedom of movement and dry comfort.



#### **Men's**

blue/black, black/green | Sizes: S-XXL; Imported  
#22533.01 | **\$989.95**



#### **Women's**

blue/blue | Sizes: XS-XL; Imported  
#22532.01 | **\$989.95**









#### WaveLite™ Union Suit

Four-way stretch Polartec® Power Stretch® fleece fabric makes this the warmest and most comfortable option for wearing under your drysuit. The double-pull zipper goes low for easy men's relief and the full-coverage design eliminates gaps where cold air could enter.

black | Sizes: S-XXL; Imported  
#10132.02 | **\$149.95**



#### Extreme Drysuits

The proven reliability and toughness of three-layer TriTon™ fabric make the Extreme a favorite of rafters, canoeists, guides and rescue professionals. Relief model with waterproof YKK® zipper makes it easy to answer nature's call without having to take the suit off.



#### Extreme

gray/yellow, blue/gray | Sizes: S-XL; Imported  
#22522.03 | **\$689.95**

Size: XXL | **\$719.95**

#### Extreme with Relief Zipper

gray/yellow, blue/gray | Sizes: S-XL; Imported  
#22523.02 | **\$784.95**

Size: XXL | **\$819.95**

Size: G2XL | **\$849.95**



### Boater's Gloves | **IMPROVED**

Perfect for summer boating. The stretchy spandex back blocks the sun, and the tough synthetic leather palm provides blister protection plus grip and control. Open finger design for dexterity.



#### Men's

blue/black | Sizes: XS-XXL; Imported  
#25005.03 | **\$19.95**



#### Women's

lt. gray/black | Sizes: XS-XL; Imported  
#25006.02 | **\$19.95**

#### Youth

blue/black | Sizes: YS-YXL; Imported  
#25007.02 | **\$16.95**



### Rafter's Gloves | **IMPROVED**

The full-fingered version of our popular Boater's Gloves. Stretchy spandex back shields your hands from the sun, while synthetic leather palms provide blister protection and improved grip.



#### Men's

blue/black | Sizes: XS-XXL; Imported  
#25008.02 | **\$19.95**



#### Women's

lt. gray/black | Sizes: XS-XL; Imported  
#25009.02 | **\$19.95**





### HydroSkin® Gloves | **IMPROVED**

A perfect balance of comfort and warmth for cool-weather boating. Our four-way stretch HydroSkin 0.5 material holds in your body's heat and moves with you like a second skin. Sticky GripCote™ palm, fleece nose-wipe panel and an improved easy on/off wrist closure.

#### Men's

black/gray | Sizes: 3XS-XXL; Imported  
#25014.02 | **\$39.95**



#### Women's

black/gray | Sizes: XS-XXL; Imported  
#25015.02 | **\$39.95**



### Axiom Gloves | **NEW**

Our most advanced lightweight paddling glove. Ultra breathable H2Core™ Silkweight fabric provides UPF 45+ sun protection while stretching four ways for unrestricted comfort. Vented synthetic leather palms help keep hands cool and blister free, and raised polyurethane pads improve grip. The soft fleece thumb panel lets you wipe your brow on those hot days in the boat.



#### Men's

black/gray | Sizes: XS-XXL; Imported  
#25034.01 | **\$24.95**

#### Women's

black/gray | Sizes: XS-XL; Imported  
#25035.01 | **\$24.95**



### Guide Gloves

Free fingers for dexterity, plus blister protection and a bit of warmth. 1.5 mm.

black/gray | Sizes: XXS-XXL; Imported  
#25013.02 | **\$19.95**





#### Crew Gloves

Extra grip, blister protection and just the right amount of warmth. 1 mm.

black/gray | Sizes: XXS-XXL; Imported  
#25010.02 | **\$19.95**



#### Youth Neoprene Gloves

Keep your youngsters happy with warm hands and great paddle grip. 1 mm.

black | Sizes: YS, YL; Imported  
#25016.01 | **\$18.95**



#### Rapid Gloves

When the mercury starts to drop, reach for this versatile lightweight glove. 1.5 mm.

blue/gray | Sizes: 3XS-XXL; Imported  
#25023.02 | **\$28.95**



#### Paddler's Gloves

The perfect combination of durability, warmth and paddle feel. 2 & 3 mm.

black | Sizes: XS-XXL; Imported  
#25025.02 | **\$36.95**



#### Rogue Gloves

Waterproof seams and a strapless HydroCuff™ wrist make this a very lovable Rogue. 2 mm.

black | Sizes: XS-XXL; Imported  
#25018.01 | **\$42.95**



#### Maverick Gloves

Waterproof, wind-proof, warm. Serious raw-neoprene grip too! 2 mm.

black | Sizes: XS-XXL; Imported  
#25017.01 | **\$49.95**





#### Natural Gloves

Maximum warmth with the natural comfort of pre-curved fingers. 3.5 mm.

black | Sizes: S-XXL; Imported  
#25022.01 | **\$44.95**



#### Creek Gloves

The ultimate in warm hand protection, with carbon-fiber armor panels and tough synthetic leather palm. 2 mm.

black | Sizes: S-XXL; Imported  
#25026.01 | **\$94.95**



#### Tactical Gloves | **NEW**

Built tough for rescue professionals and boaters who play hard. Textured armored patches provide great grip and wear like iron. 2 mm.

black | Sizes: S-XXL; Imported  
#25036.01 | **\$49.95**



#### Toaster Mitts

Our warmest "glove," built for the most frigid temps. 2.5 & 3.5 mm.

black | Sizes: XS-XXL; Imported  
#25027.02 | **\$44.95**



#### Oar Mitt

Pogies for your oars! Bare-hand grip, neoprene warmth. 5 mm.

black | Size: Universal; Imported  
#25033.01 | **\$39.95**



#### Mambas

The best of both worlds—bare-hand grip with maximum warmth. 5 mm.

gray | Size: Universal; Imported  
#25031.01 | **\$47.95**



### Sandal Sock

Ankle-height HydroCuff™ top and waterproof seams. 2 mm.

black | Sizes: XS-XXL; Imported  
#30010.01 | **\$24.95**



### Wetsock

Wear them in tennis shoes, boots or booties for extra warmth in cold water. 2 mm.

black | Sizes: XS-XXL; Imported  
#30012.01 | **\$24.95**



### Youth Wetsock

Kids can wear them in their shoes or sandals to stay warmer, and happier, on the water. 2 mm.

black | Sizes: YS, YL; Imported  
#30013.01 | **\$18.95**



### HydroSkin™ Sock

Stretchy HydroSkin 0.5 material provides warmth without bulk, and our soft ThermalPlush™ lining improves comfort. 0.5 mm.

black | Sizes: XS-XXL; Imported  
#30011.01 | **\$29.95**



### Expedition Sock

Waterproof construction and thicker neoprene make this one warm wetsock. Our HydroCuff™ top seals out debris and slows water transfer. 3 mm.

gray/black | Sizes: XS-XXL; Imported  
#30014.02 | **\$42.95**



### Boundary Sock

18" tall with HydroCuff™ top and waterproof seams. 3 mm.

black | Size: XS-XXL; Imported  
#30015.01 | **\$84.95**





© Erik Boomer



© Will Stauffer-Norris



© Will Stauffer-Norris



#### Shock Sock

Can't be beat for board feel and stability in a toasty-warm bootie. 3 mm.

black/red | Sizes: 6-14; Imported

#30038.01 | **\$49.95**



#### Freestyle Shoe

Flexible low-volume bootie designed for cramped cockpits. 3 mm.

black/yellow | Sizes: 5-13; Imported

#30017.03 | **\$49.95**



#### Desperado Shoe

Warmth, traction, comfort. Quick-drying VaporLoft™ lining with a thicker sole for better portaging. 3 mm.

black/blue | Sizes: 5-13; Imported

#30019.03 | **\$54.95**



### Kicker Remix Shoe | **IMPROVED**

Warmth, comfort and protection in a compact package. 3 mm neoprene keeps toes toasty, and the tough rubber sole provides great wet and dry traction. Stretchy rubber bands provide lateral stability, and the shoe-top drawcord keeps the shoe securely in place.

#### Men's

black/blue | Sizes: 4-14; Imported  
#30022.02 | **\$44.95**



#### Women's

gray/blue | Sizes: 5-11; Imported  
#30023.02 | **\$44.95**



#### Kicker Shoe

When you're looking for the ideal low-top bootie for your type of boating, you can't beat the NRS Kicker Wetshoe. Warmth, traction and foot protection in one classic shoe.

black/gray | Sizes: 4-14; Imported  
#30021.01 | **\$44.95**

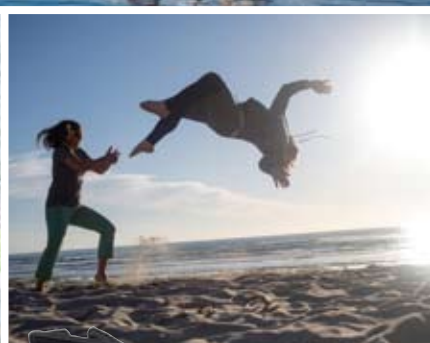
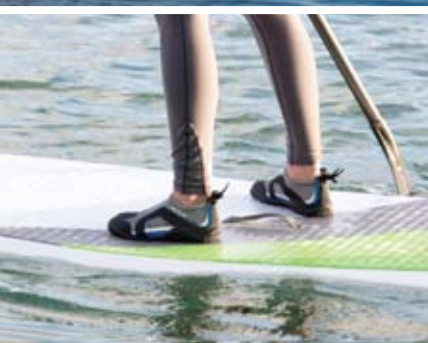


### Kinetic Water Shoe | **NEW**

If you need to tuck your feet into tight kayaks, or want to feel more in touch with your SUP board, the NRS Kinetic is your wetshoe. The 1.5 mm textured rubber sole flexes readily and protects your feet in and out of the boat. A naturally shaped toe box and 3 mm neoprene provide comfort and warmth. Stretchy rubber bands and a shoe-top drawcord combine to give lateral stability and keep the shoe securely on your foot.

black/red | Sizes: 5-13; Imported  
#30042.01 | **\$44.95**





### Boundary Shoe

Knee-high waterproof warmth and a rugged traction sole for painless portaging, launching and landing.

black | Sizes: 6-13; Imported  
#30035.01 | **\$89.95**

### Paddle Shoe

Easy zippered entry with toasty VaporLoft™ lining and natural-fitting comfort.

#### Men's

black/gray | Sizes: 6-14; Imported  
#30034.02 | **\$54.95**

#### Women's | **NEW**

black/blue | Sizes: 6-11; Imported  
#30040.01 | **\$54.95**



### Workboot

Superior toughness, warmth and support make this one hard-working wetshoe.

black | Sizes: 6-15; Imported  
#30037.01 | **\$79.95**





### cVest Type III PFD

Mesh lower back panel that's comfortable with your kayak seat—plus a radio slot, lash tab, reflective trim and strobe loop. Design Flotation: 16.5 lbs.

blue, red, orange | Sizes: S/M, L/XL, XXL  
#40028.01 | **\$114.95**







### Vista Type III PFD

A full-featured, front-entry jacket at a price any boater can love. Design Flotation: 16.5 lbs.

red, blue, gray, yellow | Sizes: XS, S/M, L/XL, XXL  
#40005.01 | **\$79.95**

### Youth Vista Type III PFD

Design Flotation: 11.5 lbs.

periwinkle, blue, red, yellow | Size: 50-90 lbs.  
#40006.01 | **\$59.95**



### Women's Zoya Type III PFD

A more comfortable alternative to standard unisex life jackets. Design Flotation: 16.5 lbs.

gray, blue, orange | Sizes: XS/M, L/XL  
#40029.01 | **\$99.95**



### Vapor Type III PFD | **NEW**

The Vapor gives you high-end performance and style at a budget-friendly price. The soft foam flotation molds to your body for "I forgot I had it on" comfort. You'll love the hand-warmer pouch and the huge front pocket that keeps what you need just a zipper pull away. The side entry with six adjustment points makes it easy to get a custom-feeling fit. Action-cut design gives total freedom of movement, no matter how you boat. Add in the knife lash tab and reflective piping, and you've got the life jacket you've been looking for. Design Flotation: 16.5 lbs.

blue, red, yellow, black | Sizes: S/M, L/XL, XXL  
#40034.01 | **\$79.95**



### Clearwater Type III PFD

Zippered front entry, two large pockets, plus a mesh lower back panel for comfort with high-back seats. Design Flotation: 16.5 lbs.

blue, red, charcoal | Sizes: S/M, L/XL, XXL  
#40007.02 | **\$89.95**



### Chinook Type III PFD

Seven pockets, multiple attachment points, and a coil retractor for anglers and boaters who like lots of handy storage space.

Design Flotation: 16.5 lbs.

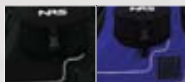
bark, blue, orange | Sizes: S/M, L/XL, XXL  
#40009.02 | **\$109.95**



### Ninja Type III PFD

Low-profile design liberates arms and shoulders for pure paddling freedom. Design Flotation: 16.5 lbs.

red, black, blue | Sizes: S/M, L/XL, XXL  
#40013.01 | **\$129.95**

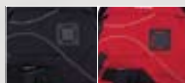


© all Trautman  
www.alltrautman.com

### Zen Type V Rescue PFD

With advanced rescue features and a dynamic suspension that flows with your body, the Zen becomes one with you so you can be one with the river. Design Flotation: 16.5 lbs.

mango, black, red | Sizes: S/M, L/XL, XXL  
#40030.01 | **\$189.95**



### Big Water Guide Type III PFD

This tough, comfortable vest gives you generous pockets, fleece-lined hand-warmers and a convenient front entry, plus extra flotation for a higher, safer float. Design flotation: 22 lbs.

slate, red, gold | Size: XS/M, L/XXL  
#40014.01 | **\$124.95**



### Big Water V Type V PFD

When you want to float serious water you need a serious life jacket. The NRS Big Water V is a high flotation jacket with a universal fit that wraps easily around anyone's torso. Design Flotation: 25 lbs.

blue/red, blue/yellow, red, orange, yellow  
Size: Universal  
#40015.02 | **\$129.95**



### Rapid Rescuer Type V PFD

Adjusts to fit chest sizes from 30 to 58 inches, and boasts all the features you will ever need in a rescue vest. Design Flotation: 22 lbs.

red, yellow | Size: Universal  
#40025.01 | **\$229.95**







### Tow Tethers

This strong tether with a built-in bungee is used with the quick-release harnesses on rescue PFDs.

#### Short Tow Tether

19" - 33" (stretched)  
#50005.01 | **\$29.95**

#### Long Tow Tether

33" - 53" (stretched)  
#50005.01 | **\$29.95**



### CFD (Canine Flotation Device)

Additional safety for any dog that spends time near the water. The NRS Canine Flotation Device gives you peace of mind by providing extra flotation for your best friend.

red | Sizes: XS-XL  
#40023.01 | **\$44.95**



### PFD Hydration Pack

Keep hydrated, on or off the water. The NRS Hydration Pack clips directly on to the back of your PFD. Or clip on the included shoulder straps for running, hiking or any other outdoor activity.

gray/black | Size: 1.5 liters  
#40022.01 | **\$54.95**

### Replacement Bladder

1.5 liter  
#40021.02 | **\$12.50**



©Sarah McVair-Landry





### Chaos Helmets

This safe, comfortable multi-impact helmet easily adjusts for a perfect fit.

#### Side Cut

red, matte black, yellow, blue, white | Sizes: XS-XL  
#42605.02 | **\$59.95**

#### Full Cut

red, matte black, yellow, blue, white | Sizes: XS-XL  
#42606.01 | **\$49.95**



### Helmet Visor

This flexible, removable NRS Helmet Visor will keep the sun and rain out of your eyes when needed, then store away for next time.

blue, black, purple, red | Size: Universal  
#42505.01 | **\$12.95**



### Elbow Pads

Add some armor to your arms. Patterned to flex easily so that your paddling motion remains unobstructed.

black | Size: Universal  
#50036.01 | **\$56.95**





### Anarchy Helmet | **NEW**

Revolutionary ConeHead™ liner spreads impact energy across a larger area, resulting in a lower, safer g-force than with any other helmet liner system.

green, black, blue, white | Sizes: M/XL

#42608.01 | **\$89.95**



## Rescue Bags

These throw bags are excellent tools for protecting you and your buddies in swiftwater emergency situations.

### Standard Throw Bag

orange, red | Size: 75"; 3/8" polypropylene  
Max strength 1,900 lbs.

#45103.01 | **\$59.95**



### Compact Throw Bag

orange, red, yellow | Size: 70"; 1/4" polypropylene  
Max strength 950 lbs.

#45100.01 | **\$54.95**



## Guardian Rescue Bags

High-strength floating rope in a waist bag—always with you, always ready.

### Guardian

red/black  
Size: 55"; 1/4" polypropylene  
Max strength 950 lbs.

#45107.01 | **\$74.95**



### Pro Guardian

yellow/black  
Size: 55"; 1/4" Dyneema®  
Max strength 2,608 lbs.

#45108.01 | **\$99.95**



## Rasta Rescue Bags

Colorful, playful take on an essential boating safety tool.

### Standard Rasta Throw Bag

red/yellow/green | Size: 75"; 3/8" polypropylene  
Max strength 2,000 lbs.

#45114.01 | **\$69.95**



### Compact Rasta Throw Bag

red/yellow/green | Size: 70"; 1/4" polypropylene  
Max strength 1,000 lbs.

#45115.01 | **\$64.95**



## Pro Rescue Bags

In addition to being stronger, Pro models include two bands of reflective tape for increased visibility.

### Standard Pro Throw Bag

yellow | Size: 75"; 3/8" Dyneema®  
Max strength 5,261 lbs.

#45102.01 | **\$119.95**



### Compact Pro Throw Bag

yellow | Size: 70"; 1/4" Dyneema®  
Max strength 2,608 lbs.

#45101.01 | **\$89.95**



## Wedge Rescue Bag

Good things can come in small packages. The NRS Wedge Throw Bag is compact, so it fits in any space in your boat—no excuses for not carrying it. Always there for that vital rescue toss.

green, yellow | Size: 55"; 1/4" polypropylene  
Max strength 950 lbs.

#45105.01 | **\$49.95**





### Kayak Un-Pin Kit

All the essentials for a basic Z-Drag setup in one small kit that fits easily in any whitewater kayak or canoe. Created specifically to address the needs of creek boaters.

#45309.01 | **\$199.95**



### Z-Drag Kit

All the hardware needed to set up basic mechanical advantage systems.

#45314.01 | **\$299.95**





#### Green Knife

Compact safety knife that slips in a pocket or clips to a lash tab so it's always handy.

green | Size: 5.875"; 2.125" blade  
#47308.01 | **\$34.95**



#### Captain Rescue Knife

Unique design makes cutting rope and webbing easy and safe.

orange | Size: 7.5"; 3" blade  
#47307.01 | **\$39.95**



#### Wingman Knife

A fast-cutting blade that's easy to open and always there when you need it.

gray | Size: 4"; 2.75" blade  
#47306.01 | **\$34.95**



#### Pilot Knife

Multi-function rescue knife in a secure quick-release sheath.

orange, black | Size: 7.25"; 3" blade  
#47300.01 | **\$44.95**



#### Titanium Pilot Knife

gray | Size: 7.25"; 3" blade  
#47301.01 | **\$119.95**



#### Co-Pilot Knife

The little brother of our popular Pilot Knife gives you multi-function performance in a compact, quick-release design.

yellow, black | Size: 5.75"; 2.25" blade  
#47303.01 | **\$44.95**



#### Titanium Co-Pilot Knife

gray | Size: 5.75"; 2.25" blade  
#47304.01 | **\$119.95**





#### **Bungee Paddle Leash**

Reliable bungee design keeps your paddle close no matter what happens. 3' long.

#50001.01 | **\$19.95**



#### **Coil Paddle Leash**

Tether your paddle to your wrist or deck rigging with the NRS Coil Paddle Leash. Stretches to 5'.

#50025.01 | **\$19.95**



#### **Kayak Bilge Pump with Float**

A swamped craft is as dangerous as it is uncomfortable. The 21" NRS Bilge Pump can bail out your boat and bail you out of a bad situation in no time.

#50033.01 | **\$19.95**







#### Sea Kayak Paddle Float

Stows easily, inflates quickly and works flawlessly to help you re-enter your boat in open water.

#50006.01 | **\$49.95**



#### Pro Kayak Tow Line

Quick-release waist-belt design lets you safely tow a boat in distress. Handy for paddling with kids too!

55' of polypropylene rope | fits up to 52" waist

#50003.01 | **\$79.95**



#### Deluxe Touring Safety Kit

All the safety essentials packaged in our mesh deck bag. Don't leave shore without it.

#50018.01 | **\$114.95**



#### Foam Paddle Float

Instantly ready to serve as an outrigger for boat reentry. 18"L x 8.5"W x 3"D

#50007.01 | **\$29.95**



#### Kayak Tow Line

Essential rescue gear for towing an injured or fatigued boater.

50' of polypropylene rope | fits up to 50" waist

#50002.01 | **\$59.95**



#### Basic Touring Safety Kit

Paddle float, bilge pump, whistle and sponge—the essentials for touring safety.

#50017.01 | **\$69.95**



#### Overhaul Deck Bag

The perfect day pack for the touring kayaker. Attaches easily to deck rigging and keeps snacks and supplies close at hand.

red/black | Size: 17"L x 5"H  
#50015.01 | **\$69.95**



#### Taj M'Haul Deck Bag

Feature packed with attachments for your water bottle, bilge pump and paddle float, plus an inner storage bag that's totally dry.

red/black | Size: 17"L x 5"H  
#50016.01 | **\$99.95**



#### HydroLock™ Map accessory Cases

No more soggy charts. No more maps flapping in the wind. The NRS HydroLock Map accessory Case helps you navigate with ease. Just fold your map to the right section, seal it inside, secure it to your boat, and go!

Sizes: XS-L  
#55026.01 | **\$13.95-\$29.95**





#### Kayak/SUP Hanger

Easy, convenient way to store your kayak and paddle. Strong nylon straps suspend your gear from a wall or ceiling, freeing up valuable storage space.

#50024.01 | **\$24.95**

#### ◀ Whitewater Kayak Sherpa

Packing your boat into and out of that sweet creeking run is a breeze with the NRS Whitewater Kayak Sherpa. With the padded hip belt and shoulder straps, it's like a hiking backpack on steroids!

#50019.01 | **\$79.50**



#### Touring Paddle Bag

Total protection for your two-piece touring kayak paddle. The NRS Touring Paddle Bag protects your paddle from scratches and cracks that occur during road trips and airline travel.

yellow/black | holds up to 3 two-piece paddles

#50021.01 | **\$89.95**



#### Whitewater Paddle Bag

Travel insurance for your one-piece whitewater paddles.

red/black | holds up to 3 paddles

#50020.01 | **\$99.95**





#### Super Stretch Cockpit Cover

Seal your boat for storage or travel. Two convenient sizes fit nearly any kayak.

Sizes: universal, universal plus

#52505.01 | **\$49.95**



#### Deluxe Cockpit Cover

Four sizes to cover just about any kayak cockpit—adjustable, durable and economical.

Sizes: XS-L

#52501.02 | **\$44.95**



#### Neoprene Cockpit Cover

Nothing beats neoprene for a stretchy, taut seal and extreme durability.

Sizes: S-L

#52502.01 | **\$49.95**



#### Zippered Mesh Cockpit Cover

Mesh material lets your boat air out, and the zippered entry provides easy access to the cockpit.

Size: L

#52503.01 | **\$49.95**



©Eric Parker





## Drylander Sprayskirts

Years of evolution in sprayskirt design and features have led to the creation of our NRS Drylander series. All models are patterned to stretch easily and fit drum-tight on today's kayak cockpit designs. Rubberized inner deck coating grips the cockpit rim from the inside, resisting slippage and implosion. The four-way-stretch PowerSpan™ neoprene tunnel material gives a snug fit without constricting. RawHide model features a tough raw-neoprene deck surface that holds up to any abuse you can imagine.

### Drylander RawHide

black/red | Waist: S-XL; Deck: S-L  
#52525.01 | **\$124.95**



### Drylander Shock Cord

black | Waist: S-XL; Deck: S-L  
#52522.02 | **\$104.95**



### Drylander Shock Cord Youth

black | Waist: S/M, L/XL; Deck: Youth  
#52520.01 | **\$89.95**



### Drylander Universal

black/blue | Waist: Universal; Deck: S-L  
#52523.01 | **\$109.95**



### Neo Touring

This neoprene touring skirt stretches tight for a secure fit in all conditions.

blue/gray | Waist: S/M, L/XL; Deck: L  
#52550.01 | **\$98.95**



### Catalina

A convenient, affordable skirt for keeping rain and light spray out of your kayak. Four sizes to fit nearly any cockpit.

gray | Waist: Universal; Deck: XS-L  
#52555.02 | **\$54.95**





### 3-D Canoe Solo Float

Designed to fit the bow and stern areas of the most popular whitewater solo canoes.

#50085.01 | Long: 57"L x 38"W x 24"D | **\$119.95**

#50086.01 | Short: 42"L x 40"W x 24"D | **\$109.95**



### Canoe Center Float

Fits in the area between the two seats of a tandem canoe, leaving just enough room for the stern paddler's legs.

#50088.01 | 49"L x 32.5"W x 24"D | **\$139.95**



### 3-D Canoe End Float

Patterned to fill the space behind the stern seat and in front of the bow paddler's legs in most tandem canoes.

#50087.01 | Single: 29.5"L x 28.5"W x 18"D | **\$54.95**

| Pair | **\$89.95**





### HydroLock™ Stow Float

Fill the bag with your gear, zip the HydroLock closure shut, then add air to maximize buoyancy and water displacement.

orange | Size: 30"L x 18"W x 7"W at point  
#50083.01 | **\$74.95**



### Infinity Flotation

These will be the last float bags you buy, because they won't leak, ever. The urethane material simply can't delaminate. Put them in your boat, blow some air inside, and forget about them.

### Standard Kayak Flotation

Patterned so that a single bag fills the entire stern compartment of a kayak designed without a center pillar.

#50081.01 | Sizes:

Sml. 31"L x 22"W x 3"W at point | **\$39.95**

Med. 37"L x 19"W x 3"W at point | **\$44.95**

Lrg. 47"L x 24"W x 3"W at point | **\$49.95**



### Split Kayak Flotation

Long and narrow flotation bags fit on either side of a kayak's center support pillar. The full set includes two bow bags and two stern bags.

#50080.01 | Sizes:

Bow 23"L x 10"W x 3"W at point | **\$26.95**

Stern 33.5"L x 13"W x 3"W at point | **\$39.95**

Full Set of Four | **\$99.95**

Pair of Stern Bags | **\$69.95**



### Rodeo Kayak Flotation

Short and narrow flotation fits on either side of the stern support pillar in today's short freestyle kayaks.

#50084.01 | Sizes:

Single 28"L x 13"W x 3"W at point | **\$29.95**

Pair | **\$54.95**







### MightyLight Dry Sack

Super lightweight silicone-impregnated ripstop nylon keeps your clothing, food and other gear dry and organized. Taped seams and the fold-down StormStrip™ closure seal the deal. Slide easily into kayak hatches and other bags.

orange | Sizes: 5L, 10L, 15L, 25L, 35L

#55037.01 | **\$14.95-\$34.95**



### HydroLock™ Dry Bags

Urethane-coated nylon for durability and a clear urethane window for finding your gear. The HydroLock closure is 100% waterproof.

#### Round Bottom

orange | Sizes: XS-L

#55025.01 | **\$24.95-\$42.95**

#### Grommetted Bag

orange | Sizes: XS-M

#55027.01 | **\$18.95-\$29.95**



Photos: © Freya Fernwood  
www.fernwoodphotography.com





### Dri-Stow Dry Bags

These bags are made of a 17 oz. clear vinyl that's tough, yet economical. Great for storing items you need during a day on the water. Fold-down StormStrip™ closure doubles as a convenient carry handle.

red, blue, clear | Sizes: XS-L, X-Long

#55021.01 | **\$15.95-\$29.95**



### Ricksack Dry Bags

All the advantages of a see-through bag with the added durability of a thread-reinforced heavy-duty PVC body. This is the most durable transparent bag on the market. StormStrip™ closure folds down to create an incredibly dry seal.

clear | Sizes: XS-L, X-Long

#55022.01 | **\$21.95-\$36.95**



### Tuff Sack Dry Bags

The innovative StormStrip™ closure ensures a watertight seal. Heavy-duty PVC/polyester construction creates a bag that will last for years to come.

blue, red, green | Sizes: XS-L, XXL, X-Long

#55023.01 | **\$19.95-\$42.95**



## Outfitter Bags

Rugged construction for many years of use and abuse. Heavy-duty PVC/polyester, cushioned carrying handle and padded sling. The fold-down StormStrip™ closure ensures dryness.

### 2.2 Outfitter Bag

red | Size: 3,695 cu. in.; 14"D x 24"H  
#55014.01 | **\$79.95**

### 3.8 Outfitter Bag

blue, red | Size: 6,635 cu. in.; 16"D x 33"H  
#55014.01 | **\$89.95**

## System 5 Bag

Packing for multi-day trips requires a system. This bag helps you put it all together with five spacious cubic feet of waterproof storage. Heavy-duty PVC/polyester construction make this bag the toughest on the water. Includes a shoulder sling for easy transport.

assorted colors (based on availability)  
Size: 8,445 cu. in.; 16"D x 42T  
#55016.01 | **\$94.95**



## Bill's Bags

The tough, heavy-duty PVC/polyester construction will take years of abuse. The innovative StormStrip™ closure ensures the most waterproof seal on the market. Comfortable, ergonomic backpack harness makes it easy to carry up the beach or on a long portage. Bag handle and compression straps are welded to the bag with our heavy-duty double patch system. The 34-oz. floor of the Heavy Duty Bill's Bag extends six inches up the sides for added durability.

### 2.2 Bill's Bag

blue, red, yellow, green | Size: 3,695 cu. in.; 14"D x 24"H  
#55012.01 | **\$84.95**

### 3.8 Bill's Bag

blue, red, yellow, green | Size: 6,635 cu. in.; 16"D x 33"H  
#55010.01 | **\$94.95**

### 3.8 Heavy-Duty Bill's Bag

red | Size: 6,635 cu. in.; 16"D x 33"H  
#55011.01 | **\$109.95**







#### Expedition DriDuffel

Duffel-style design makes finding things easy, and the urethane-coated Cordura® wears like iron. Sure to become your favorite dry bag.

black, blue, clear | Sizes: S, M  
#55024.01 | **\$84.95-\$99.95**



#### Access Bag

Roomy duffel-style dry bag with a clear top for locating just what you need.

blue/clear | Size: 77 L; 23"L x 12"W x 17"H  
#55006.01 | **\$64.95**



#### K.O.S.S. Bag

The NRS K.O.S.S. was created with a singular purpose in mind: to be able to shove all those odd sized river possessions into one massive container. Everything, including the kitchen sink, fits easily into this behemoth of a dry bag.

blue | Size: 9,108 cu. in.; 22"L x 18"W x 23"H  
#55015.01 | **\$129.95**





### Dry Boxes

Excellent dry storage for boating and all other outdoor activities. Heavy-duty cam straps securely cinch the lid. Closed-cell foam gasket in the lid helps keep water out. Non-submersible.

#### Canyon Box

orange, gray | Size: 16.75"W x 26.75"L x 16.75"H;  
3.6 cu. ft., 103 L  
#55082.01 | **\$160.00**

#### Boulder Box

orange, gray | Size: 15.5"W x 23.75"L x 10.75"H;  
1.6 cu. ft., 48 L  
#55083.01 | **\$125.00**



### Drawstring Mesh Bags

Inexpensive nylon-mesh gear bags allow wet gear to dry quickly, help gather and secure loose and assorted equipment, and keep select beverages cool on a float.

#### Small

yellow | Size: 18"W x 30"H  
#55032.01 | **\$17.95**

#### Large

blue | 124"W x 36"H  
| **\$20.95**



Photos: Colvard/Blue





### Purest Duffel

A tough, heavy-duty duffel for the pure enthusiast! The NRS Purest Duffel Bag will endure years of abuse, including, but not limited to: rough tosses into pickup beds, gentle handling from airport personnel, and your roommate's raunchy gear.

#### Small

blue, red | Size: 12"D x 24"L  
#55003.01 | **\$39.95**

#### Large

blue, red | 16"D x 30"L  
| **\$49.95**

### Quick-Change Duffel

This is the best boating accessory to come along in many a year! The NRS Quick-Change Duffel gives you a rugged, ventilating gear bag and a changing pad to protect you from the sticks, stones and stickers of life.

blue | Size: 16"D x 30"L  
#55004.01 | **\$64.95**



### GO! Bag

No matter what the adventure—boating, skiing, climbing or a visit to the in-laws—the Go! Bag will carry your stuff there in style. Rugged Cordura® upper and a tough, waterproof urethane bottom will keep this bag going year after year.

red/black | Size: 16"D x 30"L  
#55001.01 | **\$79.95**



### River Duffel

This roomy, heavy-duty bag was designed with the rescue professional in mind while addressing the needs of the larger boating community.

red/black | Size: 16"D x 30"L  
#55002.01 | **\$64.95**



### 1" Straps with Buckle Bumpers | **NEW**

Toss the buckle end over that composite kayak on top of your car with no fear of damage to boat or vehicle. The soft polyurethane bumper cradles the buckle in 360° protection without interfering with its operation. The bumper stays firmly in place but can be removed so you can move it to another strap. You get the same high-strength webbing and double-spring cam buckle you've always enjoyed in our world-famous Heavy Duty Straps, plus extra peace of mind. Sold in pairs.

Sizes: 9', 12', 15', 20'

#60003.02 | **\$14.50-\$17.95**



### Buckle Bumper | **NEW**

Cover the cam buckles of all your 1" NRS Straps. Eliminate dents, dings and scrapes with the soft polyurethane Buckle Bumper.

#60021.01 | **\$7.95/pair**



### 1" Straps

The very best cam straps you can buy. Period.

Sizes: 1', 2', 3', 4', 6', 9', 12', 15', 20'

#60001.01 | **\$4.00-\$7.75**

### 1" Straps Sold in Pairs | **NEW**

Sizes: 9', 12', 15'

#60001.01 | **\$10.95-\$12.95**





### Loop Straps

Commonly used on raft frames to strap down coolers and dry boxes. When you unbuckle the strap to get something out of the cooler, each end remains fixed to the frame, ready to be tightened again.

Sizes: 4', 6', 9'

#60005.01 | **\$5.95-\$6.80**



### Bow/Stern Tie-Down Kits

Ideally suited for strapping boats and other cargo to a trailer or roof of a car.

Sizes: Small - 6', 24" buckle end

#60008.01 | **\$16.15/pr.**

Large - 14', 40" buckle end

**\$21.55/pr.**



### Barrito Car Rack Wrap | **NEW**

Wrap your crossbars in cushiony 8 mm neoprene to protect your valuable cargo. Sold in pairs.

#62556.01 | 22" - **\$39.95**

| 32" - **\$44.95**



### Barrito Car Rack Wrap with Straps

Includes a pair of 6' NRS Loop Straps to secure your gear to the rack.

#62557.01 | 22" - **\$49.95**

| 32" - **\$54.95**

When you hit the highway and head outdoors, take along an NRS inflatable SUP board. Or two. There's no easier way to get off the beaten path and on the water. They store in a closet and fit in the car—no need for a roof rack. And when you're done playing, just deflate, roll up and roll out.

Drop-stitch construction lets you inflate these boards to a rigid 15 psi, and we build them tough with heavy duty materials and top-quality valves. Each board comes with its own high-pressure pump, backpack, and five interchangeable fins that let you customize your setup.



#### Jester | **NEW**

Youths and smaller adults who find the performance of conventionally sized SUPs lacking will love the NRS Jester. With reduced volume and a narrower width, the Jester provides a better SUP experience for paddlers weighing less than 120 pounds.  
Size: 9'W x 28"W x 3"D; 18 lbs.  
#86116.01 | **\$895.00**



#### Valencia | **NEW**

Women stand up paddlers looking for a great all-around board that's easy to transport and store will love the Valencia SUP. Whether for fitness paddling or light surfing and river running, this inflatable board delivers.  
Size: 9'6"L x 32"W x 4"D; 22 lbs.  
#86115.01 | **\$995.00**



#### Mayra | **NEW**

The Mayra brings fitness-minded women an inflatable board designed to provide more deck space and stability for better workouts on the water. SUP yoga fans will especially love this design.  
Size: 10'6"L x 32"W x 4"D; 24 lbs.  
#86113.01 | **\$1,095.00**







#### Baron 4

Long, wide and built to glide, the Baron 4 gives you a sturdy platform for flatwater cruising, touring, fitness paddling, river running, and even SUP yoga. Its broad, stable deck gives you room for gear (and pets), and the tapered tail makes it surprisingly agile for its size.

Size: 11'4"L x 36"W x 4"D; 27 lbs.

#86102.02 | **\$1,195.00**



#### Baron 6

The Baron 6 gives you the same performance as the Baron 4, but with extra buoyancy for carrying larger paddlers and more cargo. You'll love this board for flatwater cruising, touring, fitness paddling, river running and SUP yoga. It's great for bringing along kids and dogs, too!

Size: 11'4"L x 36"W x 6"D; 27 lbs.

#86099.01 | **\$1,395.00**



#### Earl 4

Built for efficient paddling and smooth turning, the Earl 4 gives you a sleek, swift ride for fitness paddling, flatwater cruising, river running and light surfing. It's a can't-miss choice for paddlers seeking one inflatable board that can do it all.

Size: 10'6"L x 30"W x 4"D; 21 lbs.

#86100.02 | **\$1,045.00**

#### Earl 6

The Earl 6 gives you the same sleek, swift ride as the Earl 4, but in a thicker design with more volume for larger paddlers. Whether you're paddling for fitness, fun or thrills—on flatwater or waves—this board has you covered.

Size: 10'6"L x 30"W x 6"D; 22 lbs.

#86098.01 | **\$1,195.00**



#### Tyrant 4

Built for surfing ocean and river waves, the small but feisty Tyrant shreds like no other inflatable board. Its aggressive lines, extra rocker and kick pad make this the sportiest roll-up SUP on the planet. It's also a great board for kids.

Size: 9'L x 34"W x 4"D; 21 lbs.

#86105.01 | **\$995.00**



#### Czar 6

The big brother of the Tyrant, the Czar offers bigger paddlers a sporty inflatable board that can also carry the weight. Its extra buoyancy and aggressive design make it equally adept at surfing and down-river paddling, plus it's impressively fast on flatwater.

Size: 9'6"L x 34"W x 6"D; 22 lbs.

#86106.01 | **\$1,195.00**



### Super Pump | **NEW**

Inflate stand-up paddle boards and other high-pressure craft with this affordable, easy-to-use hand pump. Inflates up to 20 psi with ease. Pressure gauge included.

#80016.01 | **\$34.95**



### Bravo Electric Pump

Just set the dial to the pressure you want, up to 15 psi, then watch as it inflates your board.

#80027.01 | **\$179.95**







### SUP Leashes | **NEW**

Perfect for stand up paddle surfing, the NRS SUP Leash features a comfortable calf strap and polyurethane non-coil flexible line. Two in-line swivels for tangle-free performance.

#### 8' Leash

#50010.01 | **\$24.95**

#### 10' Leash | **\$29.95**

#### 12' Coil Leash

Comfortable calf leash for surfing and flatwater SUP.

#50009.02 | **\$39.95**



### Quick-Release SUP Leash with Bag

Now you can safely leash your board for river SUP without an expensive rescue PFD.

#50008.02 | **\$49.95**



### Big Kahuna Inflatable Life Jacket

This over-the-neck style inflatable PFD stores around your waist until needed, then quickly inflates with the tug of a cord.

yellow | Size: Universal

#40026.01 | **\$99.95**

### 33g CO2 Re-Arming Kit

#40031.01 | **\$24.95**



### Lil Kahuna Inflatable Life Jacket | **NEW**

Anyone looking for an alternative to traditional life jackets will love this inflatable PFD. Stores in a slim, easy-to-wear waist belt. Flotation is centered around your torso.

yellow | Size: Universal

#40049.01 | **\$89.95**

### 18g CO2 Re-Arming Kit

#40035.01 | **\$22.95**

### PTS SUP Paddle

For a tough, economical SUP paddle, look no further than the NRS PTS Stand Up Paddle. A sturdy aluminum shaft and high-impact plastic blade make the PTS a great all-around stick for recreational paddlers.

Sizes: 72"-81", 79"-91"

#77112.01 | **\$79.95**





©Willi Stauder-Norris

[nrs.com](http://nrs.com)

