

# NRS

MAY 2015





*The Important Places, see pg. 29*  
cover *FOREST WOODWARD*

# A New Season Begins

---

It's that time of year again. In boatsheds across the northern hemisphere, rafts are rolled out, inflated and loaded onto trailers. Guides' hands tie trucker hitches, tighten straps, grip paddles and oars for the first time in months. New gear is unwrapped, unrolled, tried on and tested. Old gear is cleaned up, patched up and jury rigged, its retirement postponed for yet another year. Nervous energy courses through crews as trips fill, guests arrive, life jackets are donned and boats are launched. When the rubber hits the water and the oarlocks creak—when the voice in the stern calls the first “all forward”—the anticipation recedes, the questions are forgotten, and only the river remains.



**#guidevibes**





Kyle Smith, rigging the sweep, Boundary Creek.  
photo JACOB BOLING



Follow Smitty's journal of a season on the Middle Fork Salmon,  
*As the Oarlock Turns*, at [ducttapediaries.com](http://ducttapediaries.com)



#### Men's Tee

10004.01 | \$24.95 | S-XXL | Imported



#### Women's Tee

10005.01 | \$24.95 | XS-XL | Imported



#### Men's Benny Board Short

10141.01 | \$59.95 | 30-40 and 33 | Imported



#### Women's Beda Board Short

10142.01 | \$54.95 | 4-14 | Imported





# H2CORE SILKWEIGHT

The foundation of warm-weather layering, H2Core Silkweight keeps you cool, sunburn-free and comfortable for paddling. Wear it alone on hot days or as a base layer in cooler weather.

UPF 30

Women's Hoodie 10140.01 | \$49.95 | XS-XL | Imported



Men's Hoodie 10139.01 | \$49.95 | S-XXL | Imported



NEW



photo FOREST WOODWARD





Women's Short Sleeve 10111.01 | \$34.95 | XS-XL | Imported



Women's Long Sleeve 10115.01 | \$39.95 | XS-XL | Imported



Men's Short Sleeve 10108.01 | \$34.95 | S-XXL | Imported



Men's Long Sleeve 10114.01 | \$39.95 | S-XXL | Imported





## H2CORE LIGHTWEIGHT

Put on a piece of H2Core Lightweight apparel and you'll wonder how you lived without it. The brushed fabric is soft as your favorite flannel, yet dries quickly, wicks moisture and protects your skin from harmful rays. Its mid-weight weave is perfect for evenings, mornings and cool afternoons—on the water, in camp, or around town. UPF 50+

Women's Hoodie 10121.01 | \$64.95 | XS-XL | Imported

Men's Hoodie 10120.01 | \$64.95 | S-XXL | Imported



Men's Zip Neck

10118.01 | \$64.95 | S-XXL | Imported



Women's Zip Neck

10119.01 | \$64.95 | XS-XL | Imported



Men's Long Sleeve

10116.01 | \$54.95 | S-XXL | Imported



Women's Long Sleeve

10117.01 | \$54.95 | XS-XL | Imported







photo NOAH COUSER





photo FOREST WOODWARD

# HYDROSKIN 0.5

Stretchy 0.5 mm neoprene material provides lightweight immersion protection to help extend your season. Four-way-stretch exterior allows unrestricted movement, and the ThermalPlush™ lining feels great against your skin.

Women's Short-Sleeve Shirt  
15003.04 | \$79.95 | XS-XXL | Imported



Men's Long-Sleeve Shirt  
15002.03 | \$97.95 | S-XXL | Imported



Women's Skirt Capri  
15033.01 | \$99.95 | XS-XL | Imported

Men's Short  
15015.02 | \$69.95 | S-XXL | Imported







## HYDROSKIN 1.0

HydroSkin 1.0 provides twice the insulation of HydroSkin 0.5, without feeling bulky or restrictive. With four-way-stretch comfort and our soft ThermalPlush™ lining, it feels as good as it looks.

**Men's Shirt** 15032.02 | **\$89.95** | S-XXL | Imported

**Women's Shirt** 15034.01 | **\$89.95** | XS-XL | Imported

## HYDROSKIN 1.5

Our thickest HydroSkin offering, HydroSkin 1.5 provides substantial warmth without restricting your movements or cramping your style. Four-way-stretch exterior and cozy, quick-drying VaporLoft™ lining.

**Men's Shirt** 15035.01 | **\$119.95** | S-XXL | Imported

**Women's Shirt** 15036.01 | **\$119.95** | XS-XL | Imported





## BOATER'S GLOVES

The stretchy spandex back blocks the sun, and the tough synthetic leather palm provides blister protection plus grip and control.

Men's  
25005.03 | \$19.95 | XS-XXL | Imported

Women's  
25006.02 | \$19.95 | XS-XL | Imported



## AXIOM GLOVES

The most comfortable glove you can paddle in. Stretchy sun-protective back and a grippy ventilated palm in an open-finger design.

Men's  
25034.01 | \$24.95 | XS-XXL | Imported

Women's  
25035.01 | \$24.95 | XS-XL | Imported



## HYDROSKIN GLOVES

When it's too cold to go gloveless, but you don't need winter protection, HydroSkin Gloves will cut the chill without sacrificing grip or feel. 0.5 mm.

Men's  
25014.02 | \$39.95 | 3XS-XXL | Imported

Women's  
25015.02 | \$39.95 | XS-XXL | Imported



## CREW GLOVES

This comfortable lightweight glove provides extra grip, blister protection and just the right amount of warmth. 1 mm.

25010.02 | \$19.95 | XXS-XXL | Imported



## ROGUE GLOVES

Waterproof seams and a strapless HydroCuff™ wrist make this a very lovable Rogue. 2 mm.

25018.01 | \$42.95 | XS-XXL | Imported



photo FOREST WOODWARD





## GUIDE GLOVES

Free fingers for dexterity, plus blister protection and a bit of warmth.  
1.5 mm.

25013.03 | \$19.95 | XXS-XXL | Imported



## KICKER REMIX

Warmth, comfort and protection in a compact package. 3 mm neoprene keeps toes toasty, and the tough rubber sole provides great wet and dry traction. Stretchy rubber bands provide lateral stability, and the shoe-top drawcord keeps the shoe securely in place.

Men's 30022.03 | \$44.95 | 4-15 | Imported

Women's 30023.03 | \$44.95 | 5-11 | Imported

## PADDLE SHOE

Easy zippered entry with toasty VaporLoft™ lining and natural-fitting comfort. 3 mm.

Men's 30034.03 | \$54.95 | 6-14 | Imported

Women's 30040.02 | \$54.95 | 6-11 | Imported

## DESPERADO SHOE

Warmth, traction, comfort. Quick-drying VaporLoft™ lining with a thicker sole for tough terrain. 3 mm.

30019.04 | \$54.95 | 5-13 | Imported

## FREESTYLE SHOE

Flexible low-volume playboating bootie with Vaporloft™ lining and a strapless HydroCuff ankle. 3 mm.

30017.04 | \$49.95 | 5-13 | Imported





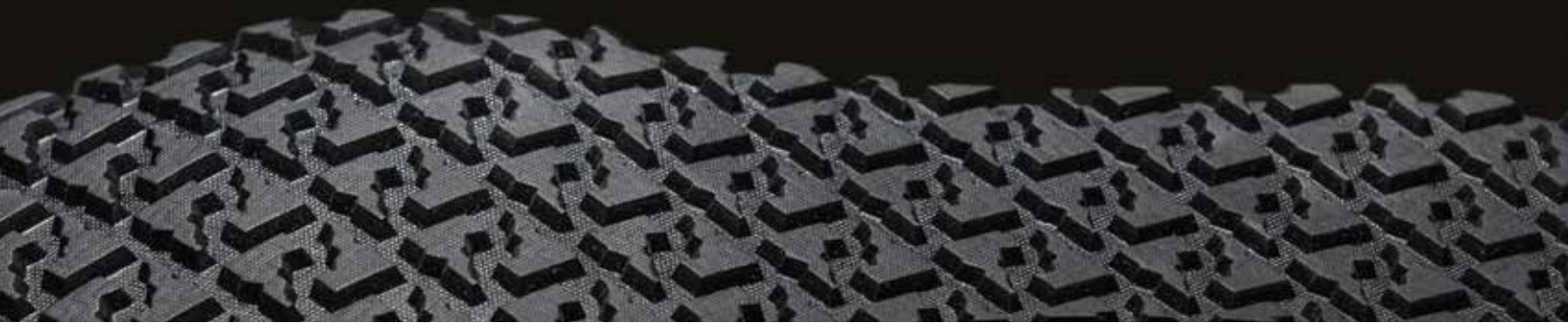


---

photo NOAH COUSER

# IDAHO SOUL

We design every piece of NRS gear and apparel in-house in Moscow, Idaho. Who we are and how we live informs every seam, stitch, material and fastener. Behind these shoes are 40-plus years of dusty roads, crusty towns, clear lakes and wild rivers—memories of hiking out after losing a paddle, changing a tire 30 miles from nowhere, dancing with locals beside a tavern jukebox, rolling out sleeping pads under the stars. We stamped our Idaho soul, literally, on their soles, but the memories you make in them are your own.



## CRUSH

For days in the boat and nights around town. For the rig-shuttle-shuffle and the treacherous trail from the fire ring to your tent. The Crush combines technical performance with casual comfort like no other shoe on the water.

Men's Crush 30043.01 | \$79.95 | 8-13 | Imported

Women's Crush 30044.01 | \$79.95 | 6-11 | Imported

## VELOCITY

Hike in, hike out, scout, set safety, style the "far right" line. The rough and rugged Velocity gives you the traction and support you need to stay confident and keep charging, whatever the mission delivers.

30045.01 | \$109.95 | 8-13 | Imported







photo JACOB BOLING









- (a) **WRSI Current Pro**  
43006.01 | \$97.95 | S/M, L/XL
- (b) **Pilot Knife**  
47300.01 | \$44.95
- (c) **Zen PFD**  
40030.01 | \$189.95 | S/M, L/XL, XXL
- (d) **Compact Rasta Throw Bag**  
45115.01 | \$64.95

Jessica Evans-Wall on her tenth Middle Fork Salmon run of the season.

photo JACOB BOLING





photo. FOREST WOODWARD



## NINJA

Originally designed for freestyle kayakers, the Ninja's athletic, low-profile design stays out of the way and off your mind for comfortable paddling or rowing in any craft.

40013.01 | \$129.95 | S/M, L/XL, XXL



## WOMEN'S SIREN

The most comfortable low-profile women's life jacket available today. Sculpted foam panels fit your curves, and our Cool Flow System™ (CFS) provides welcome ventilation on warm days.

40036.01 | \$109.95 | XS/M, L/XL







## BIG WATER GUIDE

Generous pockets, fleece-lined hand-warmers and a convenient front entry, plus extra flotation for a higher, safer float.

40014.01 | \$124.95 | XS/M, L/XXL



## VAPOR

The look, feel and performance of a high-end life jacket for a budget-friendly price.

40034.01 | \$79.95 | S/M, L/XL, XXL







photos Jacob Boling





## FORGING AHEAD

Raft frames have come a long way since the sport's pioneers first lashed together wooden racks for rowing and hauling gear. NRS frames have helped drive that evolution, from classic hitch-pin setups to modern modular systems built with our patented LoPro™ fitting. Now we've advanced frame technology even more, using forged aluminum to create stronger, lighter and sleeker components. As always, every NRS frame is hand-built onsite in Moscow, Idaho, and we welcome your custom orders.

See our full selection of frames, components and accessories at [nrs.com](https://nrs.com).



## OUTLAW RAFTS

Our Outlaw series rafts put top-end performance and durability within reach of the everyday boater. High-pressure PVC drop-stitch floors and welded PVC tubes not only make these boats exceptionally stiff and responsive, but also help keep them affordable. The flat, rigid drop-stitch floor makes a stable platform for fishermen, and whitewater chargers love how the outlaws punch holes, grab eddies and ride over waves.



## OTTER RAFTS

Otters deliver the same outfitter-grade design and construction as our Expedition Series boats in a more affordable, lighter-weight package. Even the most avid private boater will get many years of reliable performance from these hand-crafted boats. They roll compactly for easy storage and don't take a forklift to carry. We build them with long lasting, UV-resistant Pennel Orca® material and beef them up in high-wear areas for extra durability.



## EXPEDITION RAFTS

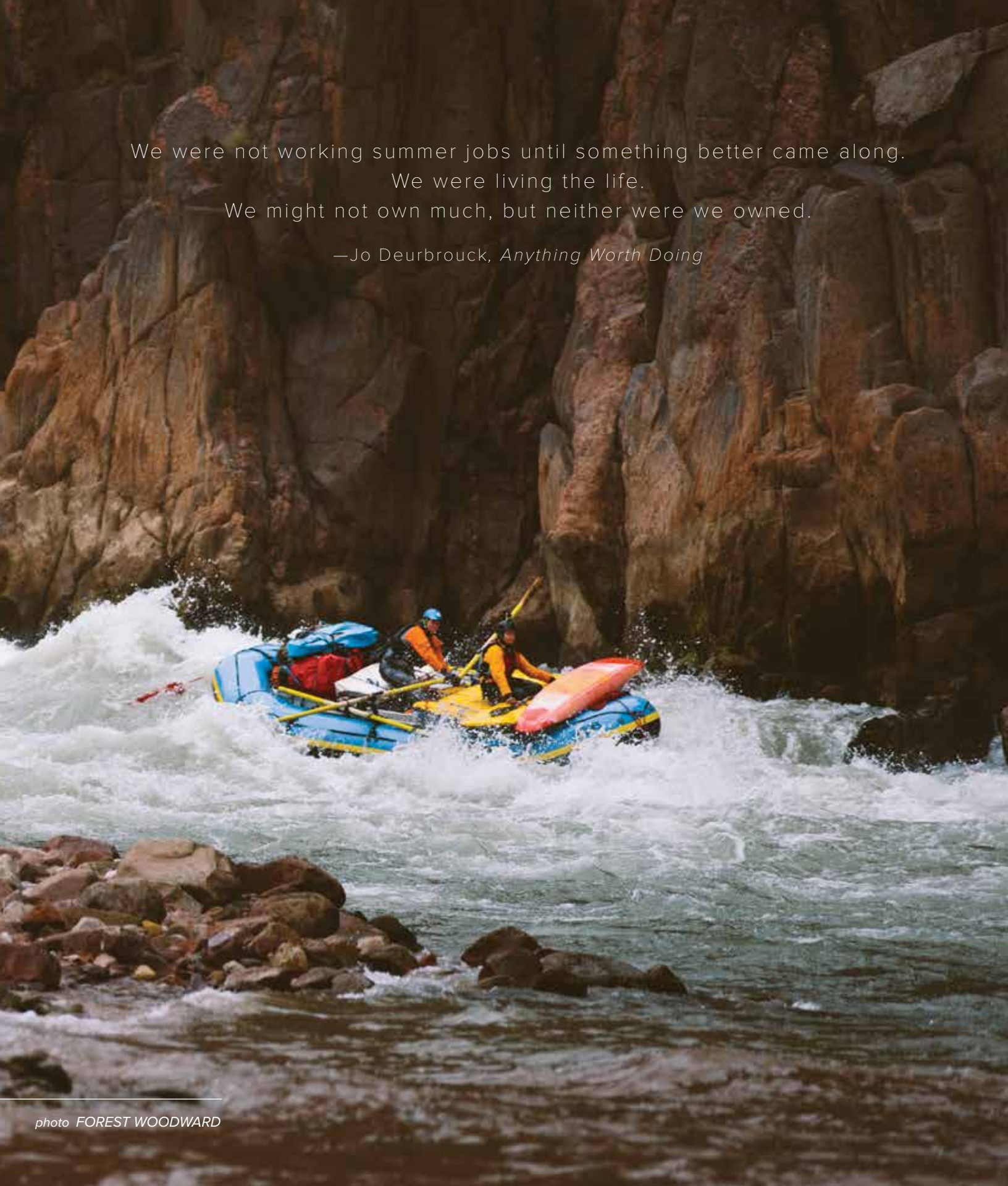
Wherever there are big rapids, sharp rocks and high stakes, you'll find NRS Expedition Series Rafts. Commercial outfitters around the world choose these boats for their proven performance and longevity. We hand cut and glue each raft using the highest grade materials and components—our thickest, toughest Pennel Orca fabric, top-quality Leafield™ C7 valves, and a full-coverage HD40 wear chafer on the bottom. If you're looking for a boat that can last you the rest of your life, and then be handed down to the next generation, look no further than the Expedition series.





We were not working summer jobs until something better came along.  
We were living the life.  
We might not own much, but neither were we owned.

—Jo Deurbrouck, *Anything Worth Doing*





## BILL'S BAGS

Pack up your sleeping bag, plus clothes and supplies for a weekend or a week, and get thee to the river. Since 1977, outfitters, guides and weekend warriors have relied on Bill's Bags to keep gear dry—trip after trip, year after year. We build them with rugged PVC/polyester material, then add compression straps, a handle and backpack straps for easy carrying. The Heavy-Duty bag adds a reinforced bottom, and all models feature our extra-dry StormStrip™ closure.

**2.2 Bill's Bag** 55012.01 | **\$84.95** | 3,695 cu. in.; 14"D x 24"H   **3.8 Bill's Bag** 55010.01 | **\$94.95** | 6,635 cu. in.; 16"D x 33"H

**3.8 Heavy-Duty Bill's Bag** 55011.01 | **\$109.95** | 6,635 cu. in.; 16"D x 33"H





## EXPEDITION DRIDUFFEL

The duffel-style design makes finding gear inside easy, and urethane-coated nylon construction takes years of abuse. Our StormStrip roll-down closure keeps contents dry without the hassle or expense of a complicated seal.

55024.01 | \$84.95-\$99.95 | S, M



## TUFF SACK DRY BAGS

Simple, durable and always dry, our time-tested Tuff Sacks come in sizes to fit every need on the river. The StormStrip closure ensures a watertight seal, and heavy-duty PVC construction creates a bag that will last for years.

55023.01 | \$19.95-\$42.95 | XS-XXL, X-Long



photos SKIP ARMSTRONG



Day 8: Postcards from Phantom.  
photos FOREST WOODWARD



# STAND UP FOR THE IMPORTANT PLACES

---

Important places. We all have them. Places that awe us, inspire us, feed our souls. Sometimes we wander far from them, but the memories remain. Sometimes we have to return so we can feel whole again.

This spring we're joining American Rivers in standing up for the places that matter most. Watch Forest Woodward's powerful new film, *The Important Places*, and learn how to help at [americanrivers.org](http://americanrivers.org).



**American Rivers**  
*Rivers Connect Us®*



**#importantplaces**





h

## CAMP KITCHEN

Start with a quiet riverside camp, add good friends, a sunset and a plateful of tasty goodness, and you've got a recipe for a perfect evening. Good food and good times go together when you're boating, and thoughtful equipment can turn cooking and cleanup from a camp chore into part of the fun. At [nrs.com](https://nrs.com), you'll find everything you need to create a camp kitchen worthy of the scene that surrounds it.

**a** Kitchen Dry Box  
55085.01 | \$435.00

**b** GSI Gourmet Kitchen Tools  
70223.01 | \$39.95

**c** GSI 14" Dutch Oven  
70949.01 | \$39.95

**d** AeroPress Coffee Maker  
70968.01 | \$31.95

**e** Primus Firehole 200 Stove  
70977.01 | \$199.95

**f** Campsite Counter  
71412.01 | \$245.00

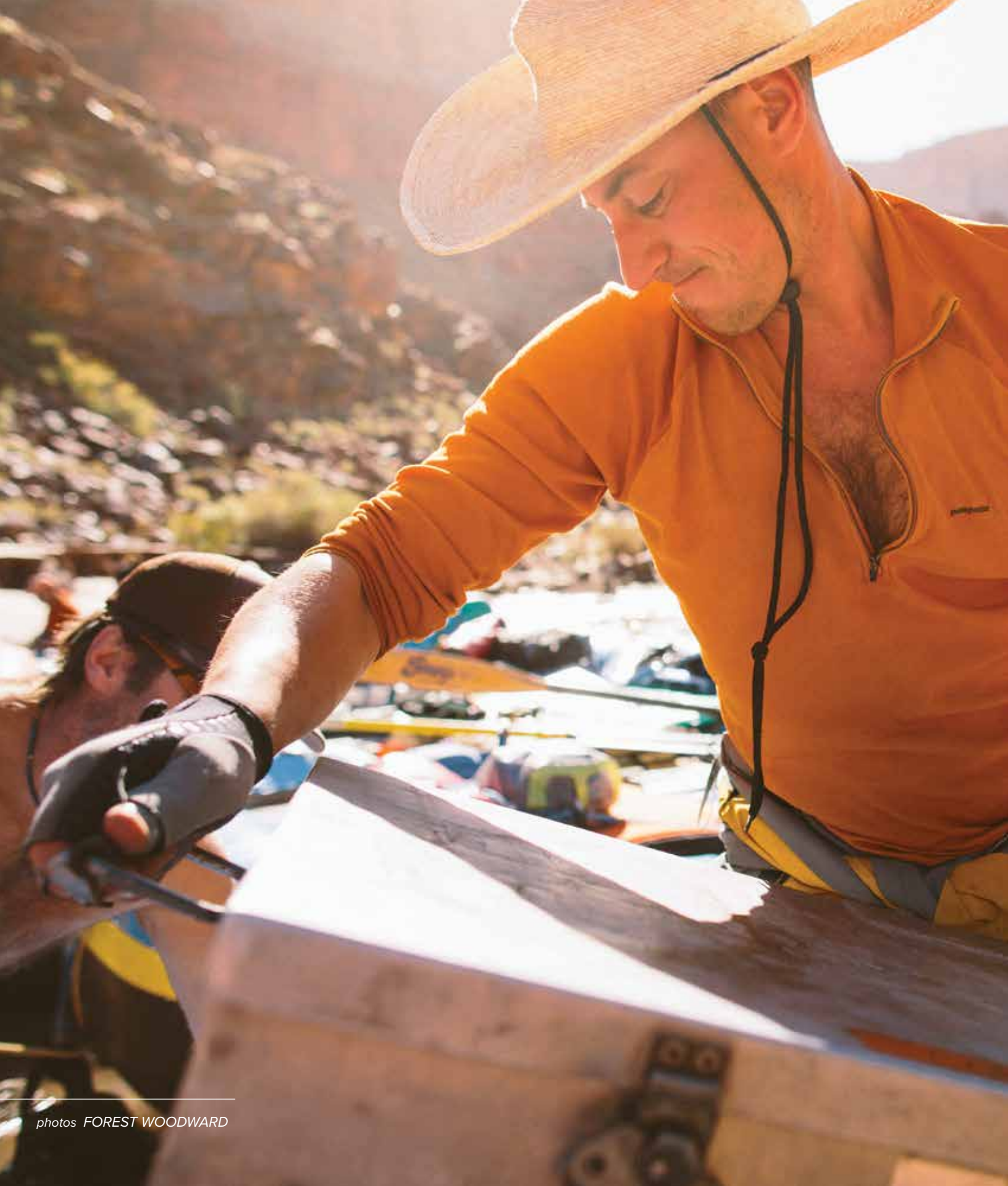
**g** Scepter Water Jug  
70850.01 | \$45.00

**h** CGear Sand-Free Mat  
71422.01 | \$79.95 | 10' x 10'

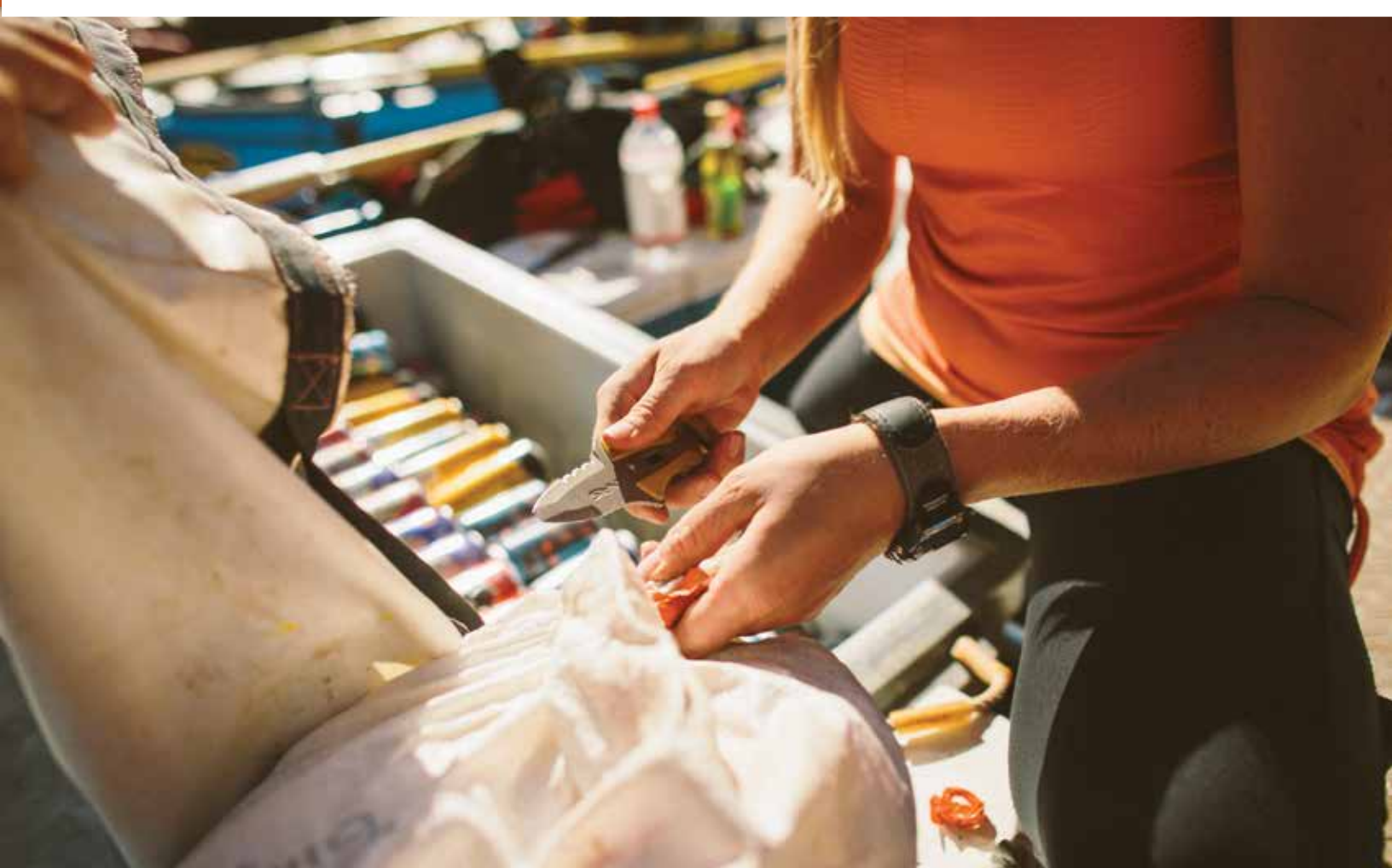




















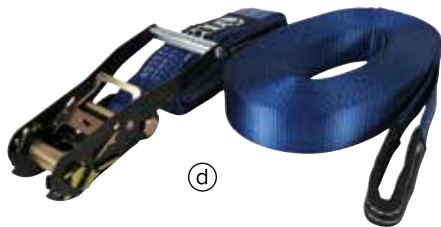
(a)



(b)



(c)



(d)



(e)



(f)



(g)



(h)

## CAMP FUN

Day three of the trip. The second hand has stopped spinning, one hour melts into another, and the impulse to check your phone has faded. You, friend, are on river time. Let us help you make the most of it.

See our full range of camp enhancers at [nrs.com](https://nrs.com).

(a) Big River Tube  
70005.01 | \$189.95

(b) ENO Twilight LEDs  
70220.02 | \$19.95

(c) Ice Cream Maker  
70218.01 | \$31.95-\$41.95

(d) ENO SlackWire Slackline  
70221.01 | \$69.95

(e) Baron 4 SUP  
86102.03 | \$1,195.00

(f) NuU Wake Bluetooth Speaker  
71780.01 | \$169.95

(g) GSI Freestyle Bocce Set  
70225.01 | \$15.95

(h) Brunton Freedom Power  
71761.01 | \$80.00



## CAMP COMFORTS

Whether you favor commando-style self support trips or floating tailgaters with gourmet meals, you know the value of that perfect piece of gear—the headlamp that helped you find your missing flip flop, the wing that rescued a rain-soaked weekend, or the bag that kept your backup skivvies dry. At [nrs.com](http://nrs.com), we stock all the supplies you need to make your overnights memorable, in a good way.

- |   |  |  |  |
|---|--|--|--|
| (a) River Wing<br>71626.01   \$399.95   | (b) Aluminum Joey Chair<br>71426.02   \$78.95    | (c) Black Diamond Apollo Lantern<br>71664.01   \$49.95     | (d) Anything Worth Doing<br>67050.01   \$15.95 |
| (e) Klean Kanteen<br>71307.01   \$29.95 | (f) Princeton Tec Headlamp<br>71640.01   \$29.95 | (g) River Bed Sleeping Pad<br>71419.01   \$149.95-\$219.95 | (h) ENO Hammock<br>71600.01   \$59.95          |










photo FOREST WOODWARD





We'll always remember the path  
that leads us back, back to the important places.

—Doug Woodward, *The Important Places*





2009 S Main St Moscow, ID 83843

Prsrt. Std.  
U.S. Postage  
PAID  
NRS, Inc.



---

nrs.com 800.635.5202