

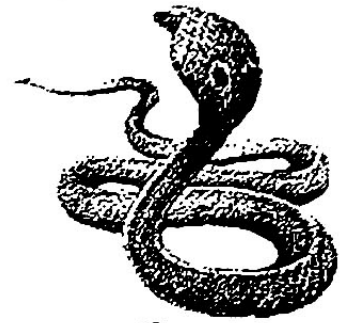
Sawyer
PADDLES & OARS

Cobra Scull Lock

The Whitewater Professional's Versatile

Heavy Duty Oar Lock

Notes on Tuning Oar Locks



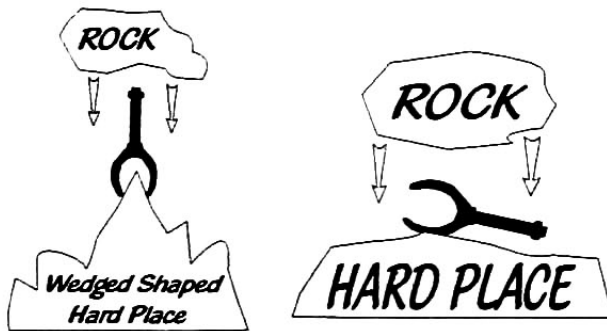
Sawyer
PADDLES & OARS

The "off the shelf" **COBRA LOCK™** will fit most whitewater oars without any adjustments. They are cast with a 2 1/4" opening (1 3/4" to 2" diameter oar) which is a good diameter for most 9' whitewater oars on the market today. The horns / hoods of the **COBRA LOCK™** are fairly massive for strength and increased spring tension. Oar locks with a smaller cross section are more easily bent. The **COBRA LOCK™** is a little harder to "tune / fit" but is also much more resistant to distortion in use and will not prematurely release.

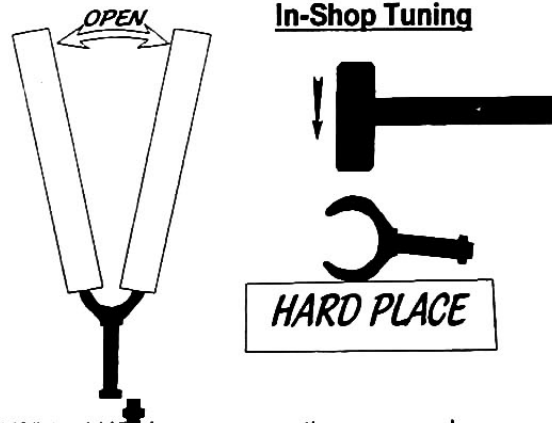
The **COBRA LOCK™** (like all other bronze locks) is designed to be adjustable to fit your oar and your style of rowing. Oar locks are designed to be "the weak link" in your whitewater rowing system. That is why stainless steel, galvanized steel or closed circle locks have never gained much acceptance for white water use. The oar lock must have the ability to release the oar in catastrophic situations (upside down over Clavey Falls!). A premature release is also very undesirable, so we've more than doubled the cross section in many areas of the lock, thus substantially increasing the "spring release strength" of the **COBRA LOCK™**.

For those of you with the experience and desire to fine tune your fit, here are some "how to" hints. Feel free to call us if you have questions. Personal preferences abound, some people like a very loose fit while others like their locks just short of binding. Custom factory tuning is available or you can do it yourself, river rocks work great .

River Rock Tuning



In-Shop Tuning

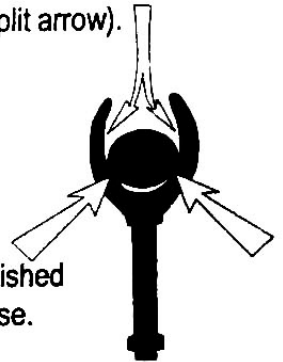


When tuning your fit, most experienced oar handlers like 1/8" to 1/4" clearance on the wrapped diameter. On the **COBRA LOCK™** this should be observed mid-way up the opening (see split arrow).

Be especially careful not to bend the shank when working on the horns / hoods.

The oar does not need to rest on the bottom of the lock. It is designed so that at rest contact should be about a quarter of the way up the opening, see arrows.

The **COBRA LOCK's™** hammered surface can be polished smooth for a slicker slide or a polished show finish. This can done with emery paper and / or rubbing compound and a little elbow grease.



Sawyer Paddles and Oars - 299 Rogue River Parkway - Talent, OR 97540 - 541-535-3606, Fax 541-535-3621

www.sawyerpaddlesandoars.com

Copyright © Sawyer Paddles and Oars 2002 All Rights Reserved.